

JR INFOCUS

A QUARTERLY PUBLICATION, WINTER 2024

The latest news, physicians,
and special announcements.



JR INFOCUS

This newsletter is Interactive!



Navigate using links found throughout the document.

SPOTLIGHT STORY

Dr. Kaliney discusses Jefferson Radiology's launch of Aidoc, an advanced AI tool, in this edition's Sub-Specialty Spotlight Q&A.



In this exclusive interview with Dr. Ryan Kaliney, he unveils the details behind the Aidoc integration within our practice and how it is benefiting patient care. Discover real patient stories and learn how our radiologists use AI to their advantage, setting the stage for a transformative future in radiology and for the future of the patients we care for.

[Click here to read more.](#)

INSIDE

MRI Updates

New Open MRI location in Glastonbury and other MRI updates.

HealthMark Simplified

Step-by-step guide to requesting medical records.

Launch of Aidoc AI Tool

Aidoc integration and what it means for your patients.

Sub-Specialty Spotlight: Q&A with Dr. Kaliney

Exclusive interview with Dr. Kaliney to learn how our radiologists use AI.

Patient Brochure Revamp

A new collection to help patients understand imaging exams.

Physician Resource Hub

Our redesigned physician webpage full of resources and quick reference guides.

A NEW OPEN MRI LOCATION

On March 1st 2024, Jefferson Radiology will take over ownership of OPEN MRI's downtown Glastonbury location, with our sub-specialized physicians reading all cases. Along with our Bloomfield location, patients will now have two options for their Open MRI.

OTHER MRI UPDATES

3T MRI in Glastonbury:

- We are upgrading our 1.5 magnet to a GE 3.0 Tesla.
- Thinner slice imaging capabilities to enhance resolution and detail.
- Faster scan time with the new air recon technology.
- Low helium requirements.
- We will be offering prostate exams for expanded scheduling options.

MRI Clinics:

Starting in 2024, our Wethersfield and West Hartford locations will be offering Sunday MRI clinics from 7:30 am to 1:00 pm.

STREAMLINED HEALTHMARK MEDICAL RECORD REQUESTS

How to Request Medical Records

Jefferson Radiology partners with HealthMark Group to offer you easy access to your patients' images and reports.

SUBMIT A REQUEST

FAX

860-327-6905

Include the patient's name, DOB and DOS on practice letterhead.

EMAIL

jeffersonradiology@healthmarkgroup.com

Attach the request or type it into the email directly.

REQUEST RECEIVED

Requests are received automatically by HealthMark and processed in one business day.

IMAGES SENT

AMBRA

Within one business day, you'll receive an email to login to your Ambra account to obtain your patient's images & reports.

POWERSHARE

If you have a Powershare account with Jefferson Radiology, you'll receive a notification to accept the images and reports in PACS within one business day.*

OPTICAL DISC

If you're not set up on Ambra or PowerShare, you'll receive a physical Optical Disc (CD) in 5-7 business days.

*An account with JR must be created in order to receive image transfers.

JEFFERSON RADIOLOGY INTRODUCES AN ADVANCED AI TOOL NAMED AIDOC

This cutting-edge technology is designed to analyze CT exams and rapidly identify critical cases that could indicate life-threatening or other urgent conditions.

Aidoc has been implemented in elite centers around the world and will help our radiologists prioritize reads effectively, elevate patient care, and save lives.

KEY POINTS ABOUT AIDOC:

- **Case Review:** Jefferson's instance of Aidoc will flag cases with urgent findings for intracranial hemorrhage, pulmonary embolisms including incidental PE, cervical spine fractures, and rib fractures.
- **Expedient Workflow:** Unlike traditional tools, Aidoc runs discreetly in the background of the radiologists' normal workflow. There's no need to manually open each case, saving valuable time and accelerating the reporting process.
- **Local Environment:** Aidoc operates in the local environment and does not send images externally or store them, assuring compliance with the highest privacy standards.
- **Clinical Only:** Aidoc is designed solely for clinical purposes. It does not use client images for any product enhancement.

*To learn more about how Aidoc is revolutionizing patient care,
visit our website at jeffersonradiology.com/ai-powered-radiology.*

Q&A SUB-SPECIALTY SPOTLIGHT: AI-POWERED RADIOLOGY WITH DR. RYAN KALINEY



Dr. Kaliney discusses how Jefferson Radiology is enhancing collaboration and patient care with the use of AI.

What does Aidoc mean for referring providers?

“Our referrers entrust Jefferson to diagnose acute, potentially life-threatening abnormalities, and a key part of that care is timeliness. Aidoc not only adds another set of digital eyes looking for these abnormalities, it also adds a level of reassurance for our referring providers that the examinations for patients’ critical findings will be interpreted as soon as possible. Aidoc runs seamlessly in the background, flagging critical cases as they are completed and presenting them to be read immediately, ultimately enhancing collaboration, responsiveness, and patient care.”

Can you share a patient story where this technology made an impact?

Recently, I had a case where Aidoc detected a subtle intracranial hemorrhage on a CT scan. The immediate alert helped save precious time, allowing the patient to receive prompt treatment at a local hospital.

Will this new technology diagnose cases?

While Aidoc doesn’t make official diagnoses, it acts as a powerful tool to aid radiologists in identifying critical findings. It highlights potential issues, allowing our radiologists to make more informed decisions and providing an extra layer of diagnostic support.

How does the radiologist account for potential AI errors?

AI can sometimes be decisive AND decisively wrong. Our radiologists are well-versed in interpreting AI-assisted findings critically. They consider AI suggestions as part of the overall diagnostic process, relying on their expertise to make the final decision. The combination of AI and human intelligence ensures accurate and comprehensive diagnoses.

What’s next for AI at JR?

The journey is just beginning. As technology evolves, we envision expanding our AI capabilities to additional imaging modalities and other pathologies. Additionally, we’re committed to ongoing research and development, continually enhancing AI’s role in precision medicine, patient care, and medical innovation at Jefferson Radiology.”

Want to learn more about Aidoc at Jefferson Radiology? Talk to your physician liaison, who can connect you with Dr. Ryan Kaliney.

A NEW EDUCATIONAL BROCHURE COLLECTION

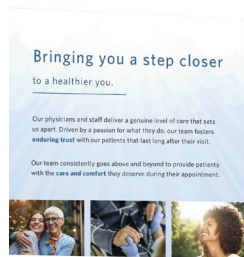
Our redesigned patient brochures are ready to educate and inform your patients more effectively than ever before.

Featuring refreshed content and easier to understand language, these brochures are designed to educate patients and help them take a more active role in their medical journeys.

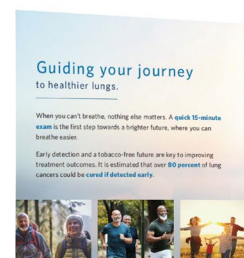
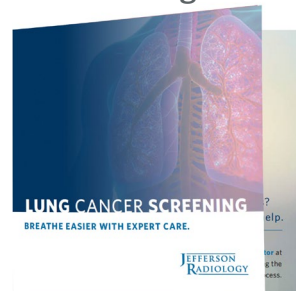
MRI



CT Scan



Lung Cancer Screening



ONLINE PHYSICIAN RESOURCE HUB

Streamlined access to essential information you need.

[Click here](#) to see our dedicated resource hub with access to the most commonly used tools for providers, right at your fingertips.

Featured Tools



[View Images](#)

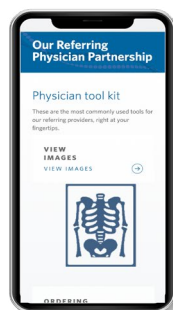
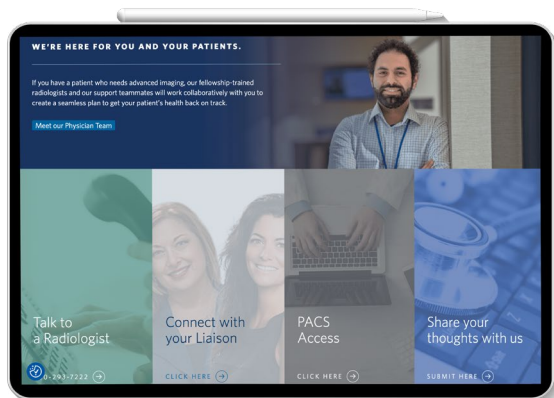
Quick link to log directly into Intelerad to view your patient images.

[Jefferson Team](#)

Quick access to connect with your physician liaison right at your fingertips.

[PACS Access](#)

Our team can provide you with PACS access or reset your password.



JR INFOCUS

